

ELEVATION CAPITAL GLOBAL SHARES FUND

Key Features

The Global Shares Fund ("The Fund") managed by Elevation Capital Management Limited (FSP#9601) is a New Zealand Portfolio Investment Entity (PIE) that seeks to provide investors with long-term capital growth and income by directly investing in equities (shares) on a global basis.

- The Fund employs a value focused investment approach;
- The Fund's opportunity set is unconstrained by market capitalisation or geography;
- The Fund is actively managed with a focus on long-term returns;
- The Fund has no entry or exit fees, no performance fees, no debt or derivatives and no index hugging; just *Independent Thinking - Disciplined Investing*.

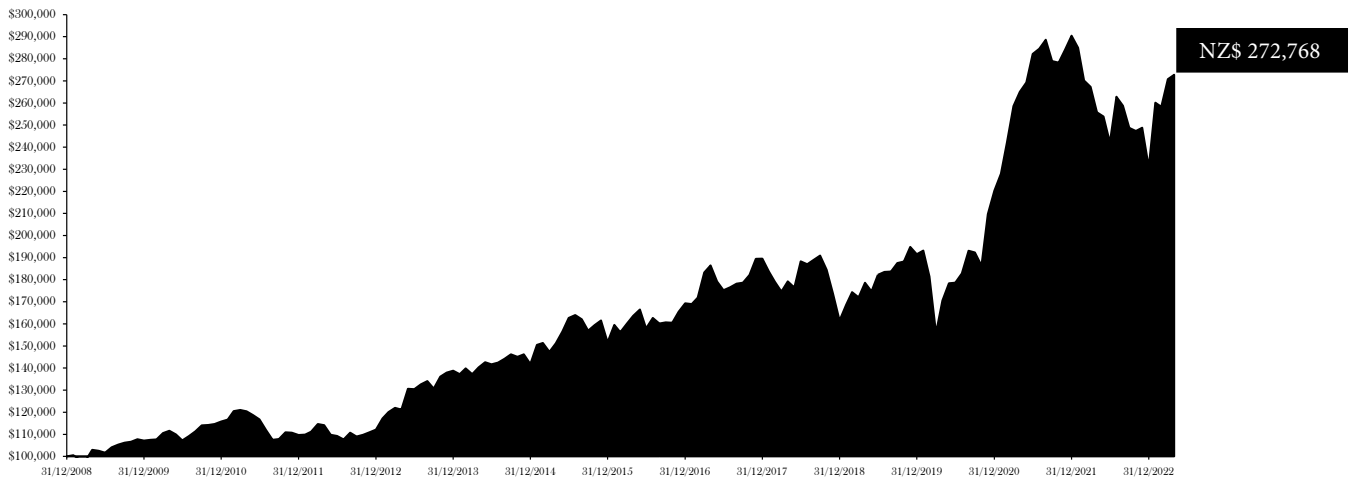
Unit Price as at 30 April 2023

NZ\$2.0944

Top 10 Positions as at 30 April 2023



Value of NZ\$ 100,000 invested (including distributions)



Net Historical Performance & Average Cash Balance

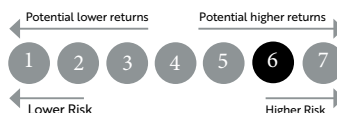
Net Performance (NZ\$)*	1 Month	FYTD#	CYTD##	1 Year Last 12 Months	2 Years Annualised	3 Years Annualised	5 Years Annualised	7 Years Annualised	10 Years Annualised	Since Inception Annualised	Since Inception Total Return
Global Shares Fund Net*	+0.73%	+0.73%	+18.09%	+6.63%	+1.46%	+16.96%	+8.76%	+7.57%	+8.45%	+7.22%	+172.79%
Average Cash Balance**	+1.88%	+1.87%	+3.90%	+2.74%	+3.07%	+4.04%	+8.86%	+12.84%	+15.30%	+20.43%	-

NZ Domiciled Investor Net Returns based on Prescribed Investor Rate (PIR):											
0% PIR Return	+0.74%	+0.74%	+18.18%	+6.83%	+1.82%	+17.32%	+9.13%	+7.93%	+8.80%	+7.62%	+187.71%
10.5% PIR Return	+0.72%	+0.72%	+18.03%	+6.49%	+1.50%	+16.99%	+8.83%	+7.68%	+8.52%	+7.33%	+176.68%
17.5% PIR Return	+0.70%	+0.70%	+17.92%	+6.23%	+1.28%	+16.75%	+8.62%	+7.50%	+8.32%	+7.16%	+170.31%
28% PIR Return	+0.68%	+0.68%	+17.77%	+5.87%	+0.95%	+16.40%	+8.31%	+7.24%	+8.03%	+6.88%	+160.55%

The performance returns detailed above are calculated using exit price to exit price, net of taxes and ongoing fees, but excluding entry costs (if any) and any individual taxes. The returns include reinvestment of all distributions. NZ domiciled investors can see net returns (after individual taxes) based on their relevant PIR. The performance quoted represents past performance, which does not guarantee future results. The investment return and principal value of an investment in the Fund will fluctuate, so that an investor's units in the Fund, when redeemed, may be worth more or less than their original cost.
Current performance may be lower or higher than the performance data quoted.

* Net of fees, expenses and taxes (accrued in the Fund).
** The average cash balance calculation is based on month end data from the Fund Administrator (MMC Limited) reports.
*** 28% is effective from 30 September 2010.
Prior to that 30% from 31 March 2008.
Financial year to date (FYTD) for year beginning - 1 April 2023.
Calendar year to date (CYTD) for year beginning - 1 January 2023.

Fund Risk Indicator



The historical returns data used to calculate the level of risk may not constitute a reliable indicator of the future risk profile of the Fund. The risk category associated with this fund is not guaranteed and can change over time. No benchmark data has been used in this calculation.

Morningstar Sustainability Rating



Rating: High
Category: Equity Region World
Sustainability Score: 18.97
See detailed Fund Report by Morningstar on:
<https://www.morningstar.com/funds/xxxx/23600/sustainability>

Fund Data

FUND DOMICILE New Zealand	FUND INCEPTION DATE 9 December 2008	FX HEDGING Unhedged	NUMBER OF COUNTRIES 12	NUMBER OF HOLDINGS 43
PORTFOLIO WEIGHTED MARKET CAP* NZ\$224.61B	GROSS DIVIDEND YIELD* 1.11%	ACTIVE SHARE* 93.56**	HOLDINGS PAYING A DIVIDEND OR BUYING BACK SHARES 74.47%***	PROFIT FACTOR**** 3.76x

* Source: Capital IQ.

** It is the proportion of security holdings in the Funds composition that is different from the composition found in - Vanguard FTSE All-World UCITS ETF.

*** The calculation is based on weighted value of each holding in the portfolio.

**** Profit factor is the sum of all profitable trades divided by the absolute value of the sum all losing trades.

Fund Holdings

Company	Domicile	% of Portfolio	Change in Holding This Month	Presentation/Summary on Website	Company	Domicile	% of Portfolio	Change in Holding This Month	Presentation/Summary on Website
HERMES PARIS		4.48%	↓	●	eurofins		2.12%	—	—
Meta		4.30%	↓	—	rakon		2.10%	↓	●
RICHEMONT		3.71%*	—	—	PayPal		1.88%	—	—
align		3.58%	—	—	ROBLOX		1.76%	—	—
WARNER BROS. DISCOVERY		3.37%	—	●	S&P Global		1.75%	—	—
De Malt		3.16%	—	—	WARNER MUSIC GROUP		1.68%	—	—
NZX		3.13%	—	●	Liberty SiriusXM Group		1.55%	—	●
Adobe		3.12%	—	●	amazon		1.45%	—	—
UNIVERSAL		3.01%	—	●	Pernod Ricard		1.27%	—	—
ESSILORLUXOTTICA		3.00%	—	●	pental		1.22%	—	●
Alphabet		2.96%	—	—	FARFETCH		1.22%	—	●
UBISOFT		2.81%	—	●	adidas		1.02%	—	—
coupang		2.77%	—	—	OLAPLEX		0.71%	—	—
The Walt Disney Company		2.68%	—	●	MYTHERESA		0.27%	—	—
iff		2.67%	—	—	Elanco		0.26%	★	—
KERING		2.64%	—	●	美团 Meituan		0.05%**	—	—
Givaudan		2.61%	—	—	Cash		1.88%	—	—
Alibaba.com		2.59%	—	●					
Spotify		2.57%	—	●					
Pinterest		2.53%	—	—					
ChristianDior		2.53%	—	●					
RÉMY COINTREAU		2.38%	↑	●					
ESTÉE LAUDER		2.38%	—	—					
airbnb		2.31%	—	—					
Paramount		2.25%	—	—					
SQUARESPACE		2.14%	—	—					
Palantir		2.13%	—	●					

* This holding comprises 4,000 Richemont Shares (3.64%) and 11,000 Richemont A Warrants (0.08%). The Fund received these Warrants on 27 November 2020. These 11,000 Warrants can be converted to 164 Richemont Shares at CHF 58.00 per shares if exercised. These Warrants were issued due to the Covid-19 Pandemic to preserve cash at Richemont. The settlement date for these European Call Warrants is 28 November 2023. For more details, refer Richemont website: <https://www.richemont.com/en/home/investors/shareholder-information/shareholder-loyalty-scheme/>

**Received as a Spinoff from Tencent Holdings Limited (SEHK:700) with the ratio of 10:1.

The maximum position size permitted within the Fund is equivalent to 5.00% of Net Asset Value.

New Position ★ Increased Position ↑ Decreased Position ↓ No Change —

Portfolio holdings are not intended as recommendations of individual stocks and are subject to change. Elevation Capital Management Limited disclaims any obligation to notify of changes to the Fund's it manages. Information about portfolio holdings does not represent a recommendation or an endorsement to Fund Unitholders or other members of the public to buy or sell any security contained in the Funds' portfolios. Portfolio holdings are current to the date listed but are subject to change any time. There are no assurances that the securities will remain in the Funds' portfolios after the date listed or that the securities that were previously sold may not be repurchased.

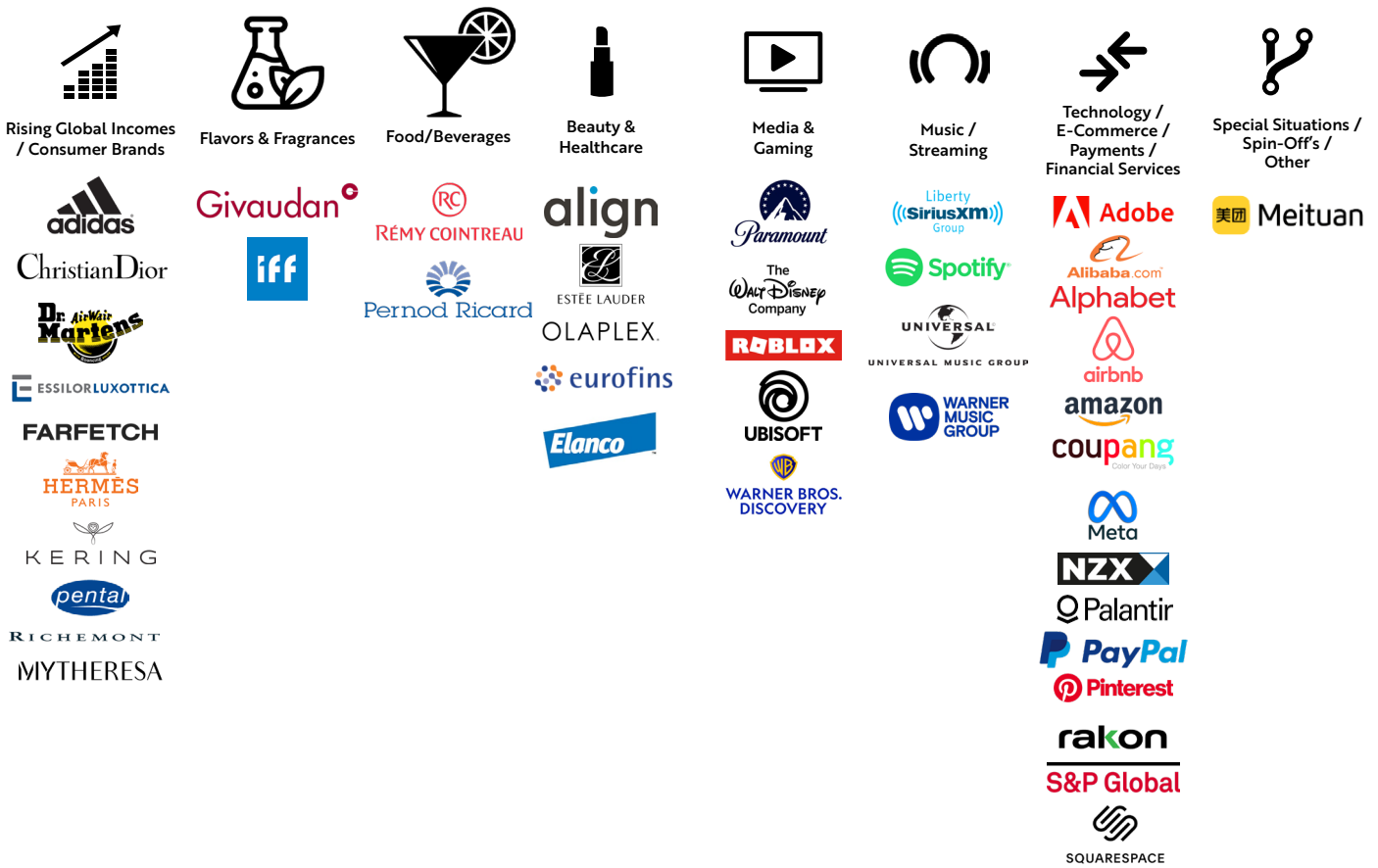
Fund Awards & Nominations





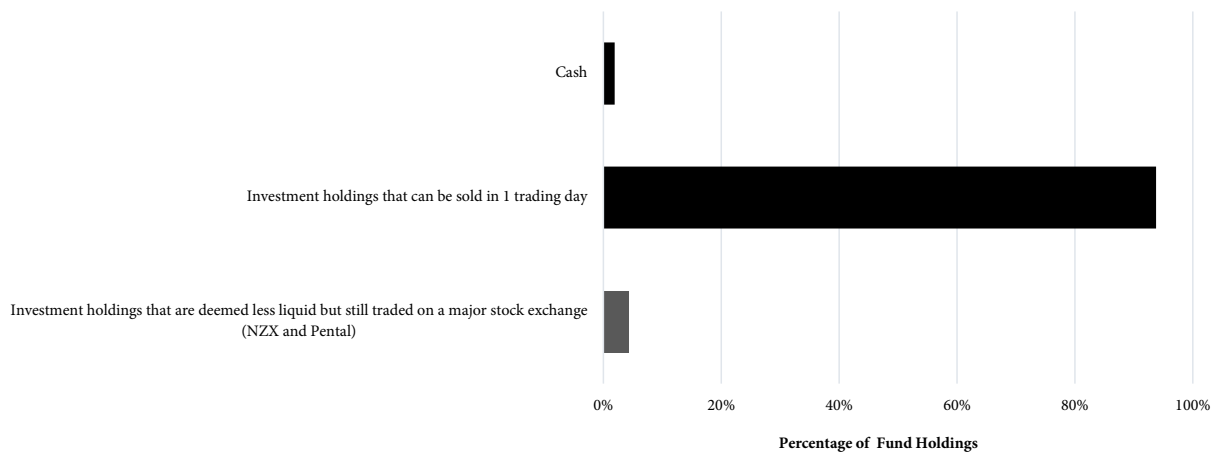
Portfolio Investment Themes

While we are not thematic investors we feel it is useful for Unitholders to have an understanding of how the current portfolio sits thematically:



Portfolio Liquidity Analysis

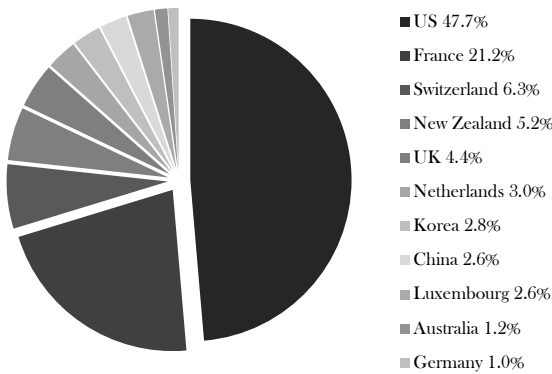
The liquidity analysis chart below details how quickly the Fund's portfolio can be liquidated as at 30 April 2023 and utilises the last 3 weeks trading data from Capital IQ.



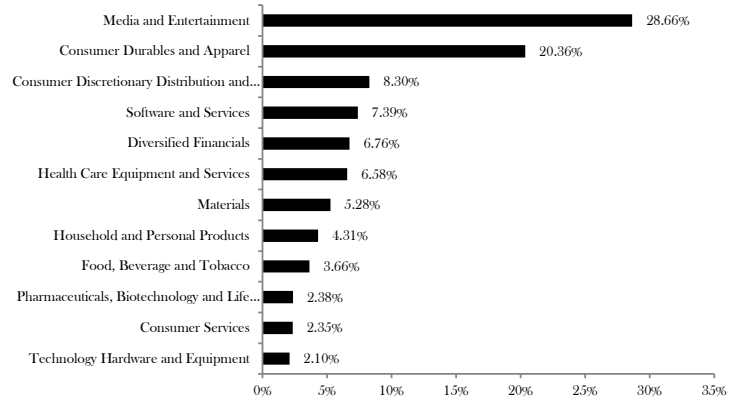
Portfolio holdings are not intended as recommendations of individual stocks and are subject to change. Elevation Capital Management Limited disclaims any obligation to notify of changes to the Fund/s it manages. Information about portfolio holdings does not represent a recommendation or an endorsement to Fund Unitholders or other members of the public to buy or sell any security contained in the Funds' portfolios. Portfolio holdings are current to the date listed but are subject to change any time. There are no assurances that the securities will remain in the Funds' portfolios after the date listed or that the securities that were previously sold may not be repurchased.



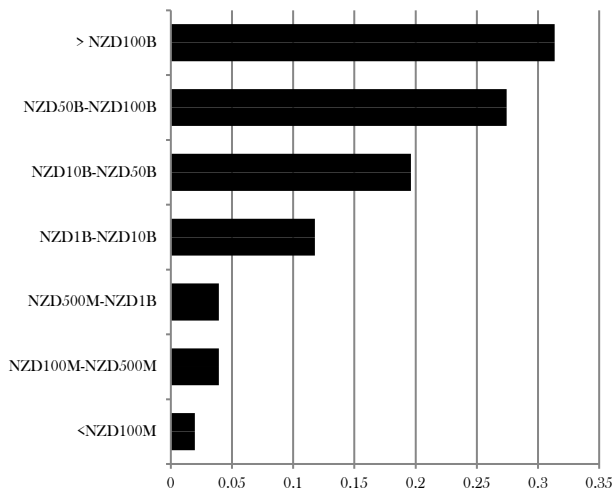
Portfolio By Country



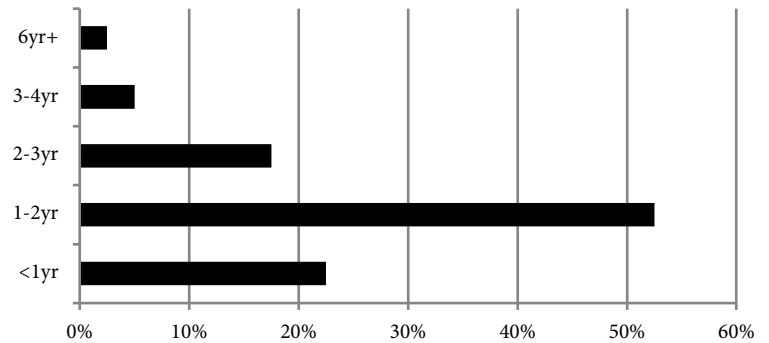
Portfolio By Industry



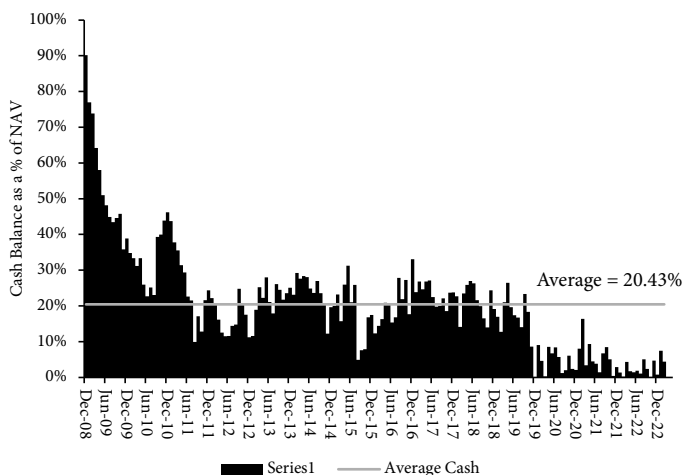
Portfolio By Market Capitalisation



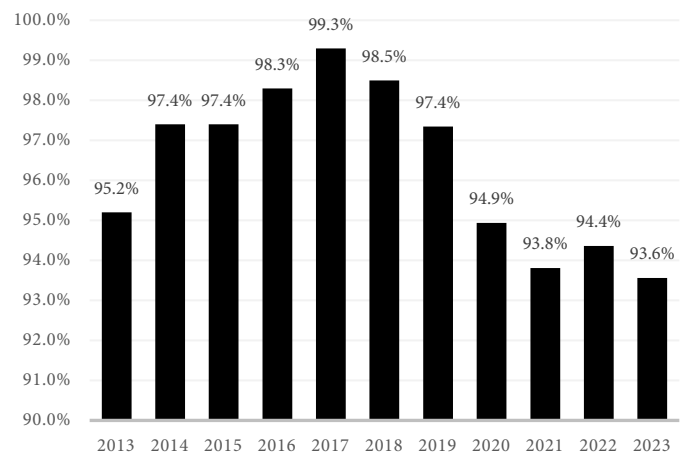
Portfolio By Holding Period



Portfolio Historical Cash Balance



Portfolio Historical Active Share*



*Active Share is a measure of the differentiation of the holdings of a portfolio from the holdings of its appropriate passive benchmark index. Elevation Capital Global Shares Fund changed Market Index to FTSE All-World Price Index as at 2 November 2022. The Active share graph above captures data from iShares MSCI ACWI ETF (Gross) until 2 November 2022, and then switches to Vanguard FTSE All-World Price UCITS ETF to provide a snapshot of the Fund's Active Share versus the relevant Market Index referred in the Fund's Offer Documents and the Disclose Register.



Portfolio Sustainability Ratings - Scores calculated independently by Morningstar

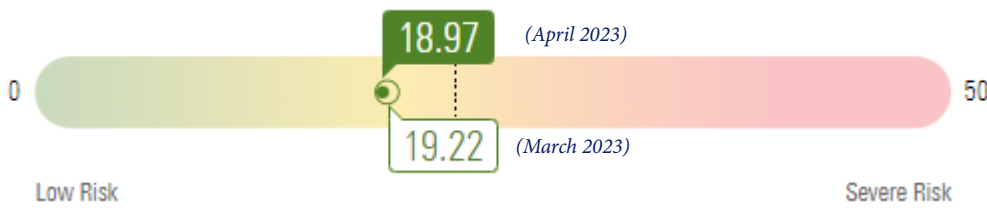
The Morningstar Sustainability Rating and score is a monthly measure of how well the companies in the fund portfolio are managing their environmental, social, and governance, or ESG, risks and opportunities relative to their Morningstar Category peers.

Sustainability

Sustainability Rating



Corporate Sustainability Score



Corporate ESG Pillars (lower scores = lower risk)



Current Sustainability Score based on 87.53% of Corporate AUM | Global Category: Global Equity Mid/Small Cap | Sustainability Score and Sustainability Rating as of March 31, 2023. Portfolio as of March 31, 2023. Sustainalytics provides issuer-level ESG Risk analysis used in the calculation of Morningstar's Sustainability Score.

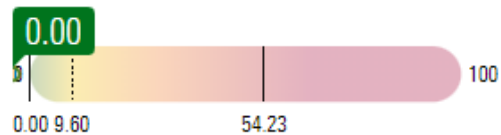
Morningstar Carbon Metrics



Portfolio Carbon Risk Score



Portfolio Fossil Fuel Involvement %



Category Best (Low) and Worst (High)
Category Average

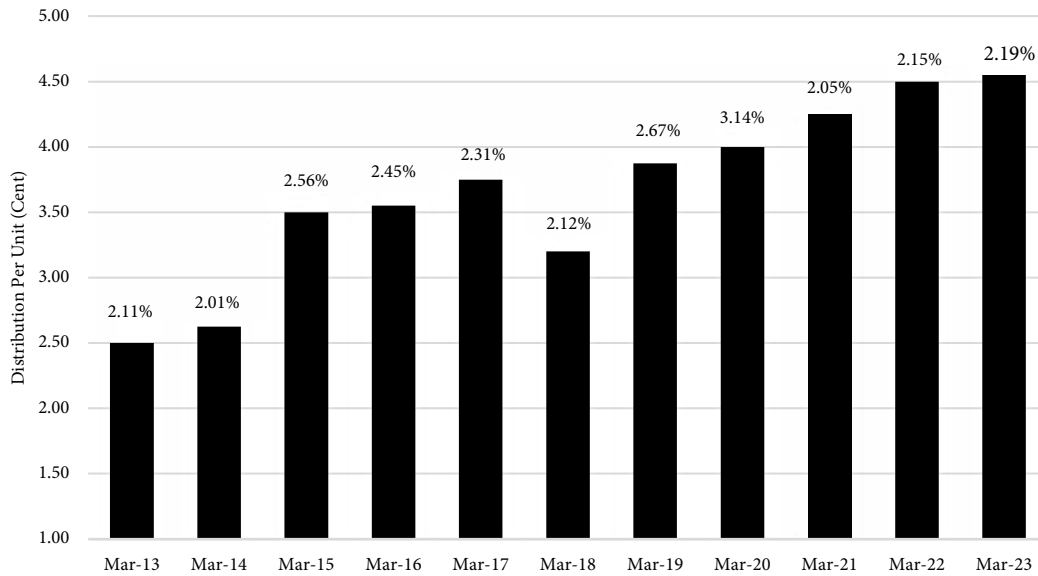
Carbon metrics as of Dec 31, 2022 | Category: Equity Region World as of Dec 31, 2022 | Based on 82% of AUM for Carbon Risk Score and 88% of AUM for Fossil Fuel Involvement

The Morningstar Portfolio Carbon Risk Score measures the risk that companies in a portfolio face from the transition to a low-carbon economy. The designation is an indicator that the companies held in a portfolio are in general alignment with the transition to a low-carbon economy.

Fund Annual Distribution History & Reinvestment Rates

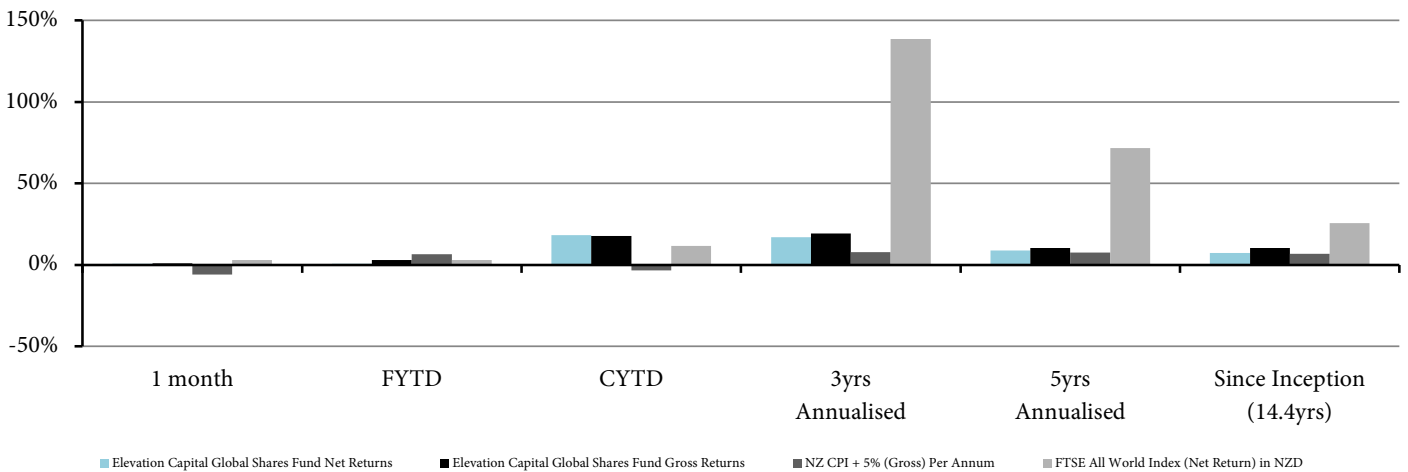
Paid as at 31 March	2023	2022	2021	2020	2019	2018	2017	2016	2015
Cents Per Unit (cpu)	4.55	4.50	4.25	4.00	3.875	3.20	3.75	3.55	3.50
Reinvestment Rate (%)	91%	76%	83%	78%	79%	71%	69%	71%	70%

Fund Annual Distribution History & Yield Per Unit (as at 31 March)



Fund Performance (Net & Gross) vs. NZ CPI+5% (Gross) & FTSE All World Index (Net Return)

For comparative purposes we have detailed two informational benchmarks we consider relevant to underlying (and prospective) investors in the Global Shares Fund. These are NZ CPI + 5% per annum (Gross Return) which we believe highlights to investors whether we are preserving and growing their real purchasing power overtime and the FTSE All World Index (Net Return) in NZD terms*. It is important to consider that our portfolio does not track or follow any index (refer the Funds Active Share statistics on page 4), and we consistently operate with conservative cash levels. We would also highlight that these two informational benchmarks are not provided for performance fee calculations as there are no performance fees charged or payable within/by the Fund.



NZ CPI data sourced from Statistics NZ.
* Data Source: Capital IQ



Fund Monthly Net Returns Since Inception (NZD)

Year	January	February	March	April	May	June	July	August	September	October	November	December	Total Return	Average Cash Balance
2008	-	-	-	-	-	-	-	-	-	-	-	0.00%	+0.00%	90.21%
2009	0.58%	-1.85%	-0.43%	4.81%	-0.46%	-0.85%	2.43%	1.11%	0.87%	0.39%	1.03%	-0.51%	+7.20%	52.13%
2010	0.31%	0.20%	2.60%	0.95%	-1.44%	-2.48%	1.78%	1.98%	2.47%	0.17%	0.39%	0.95%	+8.01%	33.23%
2011	0.76%	3.31%	0.41%	-0.50%	-1.43%	-1.62%	-4.09%	-3.96%	0.32%	2.79%	-0.11%	-0.95%	-5.22%	25.64%
2012	0.15%	1.16%	3.16%	-0.46%	-3.83%	-0.49%	-1.46%	2.90%	-1.57%	0.67%	-1.57%	1.14%	+2.20%	16.49%
2013	4.48%	2.48%	1.59%	-0.66%	7.75%	-0.09%	1.63%	1.16%	-2.54%	4.12%	1.36%	0.61%	+23.77%	22.16%
2014	-1.12%	1.92%	-1.90%	2.20%	1.70%	-0.69%	0.60%	1.20%	1.41%	-0.78%	0.78%	-3.01%	+2.17%	24.00%
2015	6.09%	0.63%	-2.66%	2.60%	3.49%	3.94%	0.81%	-1.16%	-3.15%	1.57%	1.34%	-6.13%	+6.94%	18.14%
2016	5.18%	-2.08%	2.49%	2.23%	1.76%	-5.18%	3.01%	-1.54%	0.30%	-0.08%	3.09%	2.28%	+11.61%	20.39%
2017	-0.18%	1.69%	6.68%	1.76%	-3.95%	-2.16%	0.90%	0.75%	0.26%	1.96%	4.02%	0.02%	+11.94%	23.30%
2018	-3.05%	-2.51%	-2.51%	2.65%	-1.55%	6.71%	-0.70%	1.07%	1.02%	-3.37%	-5.85%	-6.98%	-14.73%	21.24%
2019	4.38%	3.42%	-1.37%	3.85%	-2.21%	4.29%	0.72%	0.12%	2.08%	0.36%	3.49%	-1.67%	+18.55%	16.94%
2020	0.85%	-6.09%	-14.09%	9.37%	4.61%	0.18%	2.34%	5.58%	-0.41%	-3.05%	12.47%	5.06%	+14.99%	4.75%
2021	3.49%	6.36%	6.83%	2.50%	1.61%	4.80%	0.82%	1.44%	-3.35%	-0.24%	2.11%	2.22%	+31.87%	5.86%
2022	-1.88%	-5.21%	-1.05%	-4.29%	-0.78%	-4.58%	8.54%	-1.59%	-3.85%	-0.57%	0.60%	-7.16%	-20.46%	2.07%
2023	+12.61%	-0.71%	+4.85%	+0.73%									+18.09%	3.90%

Fund Long-Term Net Returns (NZD)*

	1 Year	3 Years	5 Years	10 Years	Since Inception
Global Shares Fund Net Annualised Returns	+6.63%	+16.96%	+8.76%	+8.45%	+7.22%
Global Shares Fund Average Cash Balance	+2.74%	+4.04%	+8.86%	+15.30%	+20.43%
FTSE All World Net Return Index (in NZD)	+7.17%	+11.94%	+9.81%	+11.52%	+9.11%
Outperformance/Underperformance vs. FTSE All World Net Return Index (in NZD)	-0.54%	+5.02%	-1.05%	-3.07%	-1.89%

Fund Long-Term Gross Returns (NZD)*/**

	1 Year	3 Years	5 Years	10 Years	Since Inception
Global Shares Fund Gross Annualised Returns	+8.37%	+19.35%	+10.28%	+10.43%	+9.32%
Global Shares Fund Average Cash Balance	+2.74%	+4.04%	+8.86%	+15.30%	+20.43%
FTSE All World Net Return Index (in NZD)	+7.17%	+11.94%	+9.81%	+11.52%	+9.11%
Outperformance/Underperformance vs. FTSE All World Net Return Index (in NZD)	+1.19%	+7.41%	+0.47%	-1.10%	+0.21%

Profit Factor Statistics Since Inception*

Number of Exited Positions: 377
 Profitable Positions - in Local Currency: 301
 Profitable Positions - in NZ\$: 295
 % of Profitable Positions in Local Currency: 79.84%
 % of Profitable Positions in NZD: 78.25%
Profit Factor - in NZ\$*: 3.76x**

* For period ending 30 April 2023 / Fund Inception Date: 08 December 2008

** The Fund has no foreign exchange hedging for any reported period detailed above.

*** Profit Factor is defined as the sum of all profitable trades divided by the absolute value of the sum of all losing trades. It is a metric which helps to analyse the degree to which gains are greater (smaller) than losses. For example, a Profit Factor of 3.76 indicates the gains are 3.76 times greater than the losses. (The Global Shares Fund Total Gross Investment Gains from Realised Positions: NZ\$ 26,159,358.87; Total Gross Losses from Realised Positions: NZ\$ 6,951,581.82).



Fund Monthly Returns Since Inception (USD)

Year	January	February	March	April	May	June	July	August	September	October	November	December	Total Return	Average Cash Balance
2008	-	-	-	-	-	-	-	-	-	-	-	0.00%	+0.00%	90.21%
2009	-12.90%	-1.50%	11.53%	3.86%	12.43%	0.24%	4.86%	4.69%	6.47%	-0.48%	0.97%	-0.95%	+32.79%	52.13%
2010	-3.21%	-0.25%	4.27%	3.35%	-7.92%	-1.53%	7.76%	-2.08%	7.94%	3.99%	-1.96%	5.71%	+15.91%	33.23%
2011	-0.31%	0.71%	1.96%	5.53%	0.26%	-1.10%	1.81%	-7.03%	-8.49%	7.56%	-4.36%	-0.62%	-5.15%	25.64%
2012	6.09%	3.22%	0.25%	-0.62%	-11.68%	6.45%	-0.47%	1.83%	1.78%	-0.37%	0.84%	1.67%	+8.08%	16.49%
2013	6.43%	1.11%	2.68%	1.69%	0.16%	-3.23%	4.74%	-1.69%	4.94%	3.48%	-0.03%	1.43%	+23.48%	22.16%
2014	-2.84%	5.89%	1.31%	1.18%	0.52%	2.40%	-2.48%	-0.19%	-5.58%	-0.98%	1.70%	-3.43%	-2.98%	24.00%
2015	-1.49%	4.92%	-3.54%	4.16%	-3.28%	-1.21%	-0.98%	-5.78%	-2.16%	7.43%	-1.30%	-2.47%	-6.33%	18.14%
2016	-0.59%	-0.21%	7.93%	2.96%	-1.54%	-0.18%	4.31%	-0.95%	0.53%	-1.70%	2.14%	0.62%	+13.68%	20.39%
2017	4.96%	0.31%	3.11%	-0.06%	-0.70%	0.94%	3.31%	-3.76%	1.20%	-3.38%	4.20%	3.65%	+14.18%	23.30%
2018	0.89%	-4.86%	-2.63%	0.26%	-1.96%	2.97%	-0.15%	-1.49%	0.94%	-4.82%	-0.96%	-9.19%	-19.60%	21.24%
2019	7.97%	1.62%	-1.29%	1.55%	-4.42%	7.46%	-1.02%	-4.33%	1.49%	2.64%	3.59%	3.34%	+19.28%	16.94%
2020	-3.26%	-10.00%	-17.83%	13.82%	5.00%	4.14%	5.90%	7.13%	-2.60%	-3.06%	19.60%	7.63%	+22.73%	4.75%
2021	3.59%	7.12%	2.90%	5.01%	3.10%	0.58%	0.70%	2.30%	-5.28%	-3.49%	-3.16%	3.11%	+25.37%	5.86%
2022	-5.88%	-2.33%	+1.70%	-10.69%	-0.49%	-8.86%	9.47%	-3.78%	-11.29%	+2.12%	+7.55%	-5.46%	-26.53%	2.07%
2023	+15.06%	-4.81%	+5.88%	-0.56%									+15.32%	4.58%

Fund Long-Term Net Returns (USD)*

	1 Year	3 Years	5 Years	10 Years	Since Inception
Global Shares Fund Net Annualised Returns	+1.46%	+17.00%	+5.93%	+4.95%	+7.83%
Global Shares Fund Average Cash Balance	+2.74%	+4.04%	+8.86%	+15.30%	+20.43%
FTSE All World Net Return Index (in USD)	+2.07%	+12.07%	+6.97%	+7.92%	+10.10%
Outperformance/Underperformance vs. FTSE All World Net Return Index (in USD)	-0.61%	+4.93%	-1.04%	-2.97%	-2.27%

Fund Long-Term Gross Returns (USD)*/**

	1 Year	3 Years	5 Years	10 Years	Since Inception
Global Shares Fund Gross Annualised Returns	+7.35%	+20.96%	+8.30%	+7.29%	+10.25%
Global Shares Fund Average Cash Balance	+2.74%	+4.04%	+8.86%	+15.30%	+20.43%
FTSE All World Price Index Net Returns (in USD)	+2.07%	+12.07%	+6.97%	+7.92%	+10.10%
Outperformance/Underperformance vs. FTSE All World Net Return Index (in USD)	+5.28%	+8.89%	+1.33%	-0.63%	+0.15%

* For period ending 30 April 2023 / Fund Inception Date: 08 December 2008
 ** The Fund has no foreign exchange hedging for any reported period detailed above.



Total Expense Ratio & Fees

Year Ending - 31 March	2023 (Unaudited)	2022	2021	2020	2019	2018	2017
Average Funds Under Management	NZ\$ 28,217,876	NZ\$ 27,974,539	NZ\$ 19,206,862	NZ\$ 22,107,194	NZ\$ 28,334,186	NZ\$ 27,891,382	NZ\$ 24,104,009
Total Expense Ratio* (%)	1.84%	1.88%	2.12%	1.86%	1.82%	1.91%	2.20%
Total Management and Administration Charges	NZ\$ 518,529	NZ\$ 525,706	NZ\$ 407,889	NZ\$ 410,142	NZ\$ 515,217	NZ\$ 533,976	NZ\$ 529,704
- Manager's Basic Fee	NZ\$ 356,865	NZ\$ 353,210	NZ\$ 243,534	NZ\$ 280,661	NZ\$ 357,863	NZ\$ 351,681	NZ\$ 305,673
- Other Management & Administration Charges	NZ\$ 161,664	NZ\$ 172,496	NZ\$ 164,355	NZ\$ 129,481	NZ\$ 157,354	NZ\$ 182,295	NZ\$ 224,031
Performance-Based Fees	Nil	Nil	Nil	Nil	Nil	Nil	Nil

All fees charged by Elevation Capital Management Limited, the Trustee and the Fund Administrator are detailed in the Product Disclosure Statement and Establishment Deed.
Both of which are available at www.elevationcapital.co.nz or on request free of charge from the Manager.

* Total Expense Ratio Definition: Total Expense Ratio (TER) expresses the expense ratio for a fund or unit of a fund against the average NAV (of the fund or unit respectively) over a given period in the past. The TER should reflect the past record, and should not be an estimate for the present or future. In other words, the TER is the annual percentage reduction in investor returns that would result from operating costs if markets were to remain flat and the fund's portfolio were to be held and not traded during a period.

Management Fee Scale

NAV of the Fund (NZ\$)	<\$25m	\$25m - \$30m	\$30m - \$35m	\$35m - \$40m	\$40m - \$45m	\$45m - \$50m	>\$50m
Management Fee Tiers (%)	1.25%	1.20%	1.15%	1.10%	1.05%	1.00%	0.95%

(% pa of the Net Asset Value of the Fund)

ISIN Number

NZECFE0001S2

Additional Information

Trustee/Supervisor: Public Trust
Administrator: MMC Limited
Custodian: Public Trust
Sub-Custodian: BNP Paribas
Auditor: PWC

Entry / Exit Fees: Nil
Performance Fees: Nil
Distribution Policy: Annually
at Manager's Discretion
Minimum Initial Investment: NZ\$ 5,000
Minimum Regular Contribution: NZ\$ 100 (Monthly
/ Quarterly / Annually)
Redemption Terms: Monthly
(with 1 business day notice)

Directors & Executives Holdings in Fund
(incl. Associates)*
= 731,748.17 units / NZ\$ 1,532,573.37
* Based on unit holdings as at 30 April 2023

Additional Fund Updates are provided on a quarterly basis and can be found on www.globalsharesfund.co.nz/quarterly-updates and also on Disclose Register website at: www.companiesoffice.govt.nz/disclose (search 'Elevation Capital')

Risk Disclosure Statement

Elevation Capital Management Limited is a Registered Financial Service Provider in New Zealand in accordance with the Financial Service Providers (Registration and Disputes Resolution) Act 2008 -- FSP # 9601.

Elevation Capital Management Limited is licensed under the Financial Markets Conduct Act 2013 as a manager of registered schemes.

Elevation Capital Management Limited does not provide personalised investment advisory services to the public. Nothing herein should be construed as a general advertisement of investment advisory services or a solicitation of prospective clients for investment advisory services. The information herein is intended solely to provide certain background information about Elevation Capital Management Limited and the Elevation Capital Global Shares Fund.

The information contained in this report has been prepared solely for informational purposes. It is not an offer to buy or sell or a solicitation of an offer to buy or sell units in the Global Shares Fund, a recommendation of any security or to participate in any trading strategy. If any offer of units in the Global Shares Fund is made, it shall be pursuant to a Product Disclosure Statement (PDS) prepared by or on behalf of the Global Shares Fund.

Any decision to invest in the Elevation Capital Global Shares Fund should be made only after reviewing the Product Disclosure Statement (available free of charge at www.globalsharesfund.com or by contacting Elevation Capital Management Limited, Level 4, The Blade, 12 St Marks Road, Remuera, Auckland 1050, New Zealand), conducting such investigations as the investor deems necessary and consulting the investor's own investment, legal and tax advisors in order to make an independent determination of the suitability and consequences of an investment in the Global Shares Fund.

International investments involve special risks, including currency fluctuations, lower liquidity, higher transaction costs (in some jurisdictions), different regulatory systems and accounting methods, economic and political systems. These risks are typically greater in emerging markets.

The Elevation Capital Global Shares Fund may invest a significant portion of its assets in the stocks of small and medium-sized companies, which tend to be more volatile and less liquid than those of large companies, may have underperformed the stocks of larger companies during some periods and tend to have a shorter history of operations than larger companies. Potential investment risks are discussed in the Product Disclosure Statement (PDS) and Statement of Investment Policy (SIPO). These documents are both available free of charge on request or can be accessed: at www.globalsharesfund.com.

All performance data, fee data, portfolio composition data and risk targets contained in this report are subject to revision by Elevation Capital Management Limited and are provided solely as a guide to current expectations. There can be no assurance that the Elevation Capital Global Shares Fund will achieve any targets or that there will be any return on or of capital. Elevation Capital Management Limited, its directors, employees and agents believe that the information herein is correct at the time of compilation; however they do not warrant the accuracy of the information. Save for any statutory liability which cannot be excluded, Elevation Capital Management Limited further disclaims all responsibility or liability for any loss or damage which may be suffered by any person relying on any information or any opinions, conclusions or recommendations contained herein whether that loss or damage is caused by any fault or negligence on the part of Elevation Capital Management Limited, or otherwise.

Past performance is not an indication of future results.



ELEVATION CAPITAL
GLOBAL SHARES FUND

‘Independent Thinking - Disciplined Investing’

INDEPENDENT THINKING

[In-de-pend-ent Think-ing] indəpendənt THiNkiNG verb

Is essential to long-term investment success. We are often contrarian and do not pay attention to index compositions when making investment decisions. We believe that when you're several thousand miles away from Wall Street in a different nation, it's easier to be independent and buy the things that other people are selling, and sell the things that other people are buying.

DISCIPLINED INVESTING

[Dis-ci-plined In-vest-ing] disciplinəd inves'ting verb

The market presents opportunities every day, but disciplined investing is as much about the opportunities you do not take. We also believe that cash is sometimes the most attractive investment.

Level 4, The Blade
12 St Marks Road
Remuera
Auckland 1050
New Zealand

Elevation Capital Management Limited
PO Box 28053
Remuera
Auckland 1041
New Zealand

0800 ELE CAP
(0800 353 227)
info@elevationcapital.co.nz
www.elevationcapital.co.nz
Twitter: @ElevationNZ



ELEVATION CAPITAL®